

# PLASTON metaBOX

## METABOX 300XL - FOR ANYTHING BIG

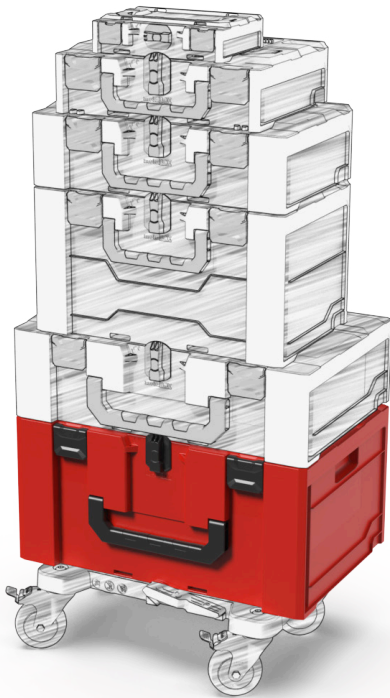


New case size for the metaBOX family.

The m300XL case is offering the biggest volume (55 Liter) within the metaBOX family, it's 115mm taller than the m185XL to fit bigger machines and heavy content.

### PLASTON CASE

- Robust top quality case made of ABS
- Connects to all metaBOX case sizes and accessories
- Mobility when needed thanks to connectable wheeled trolley
- Easy to carry with handle or side grips
- Safely stackable for transport and storage purposes
- Perfect fit for standard logistics packaging (1200x800mm)
- UN certified
- Connects to T-Lock Systainer, T-Stack, L-Boxx, MakPac, HikCase or Classic Systainer thanks to the the [metaBOX Multi-Adapter plate](#)



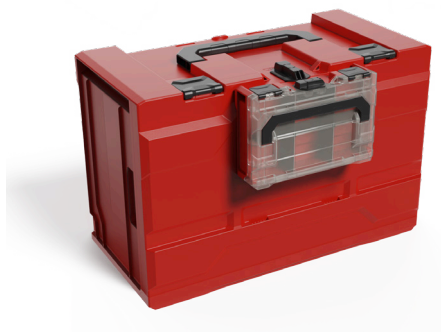
#### metaBOX 300XL

External dimensions:  
596 x 396 x 300 mm

Inner dimensions:  
577 x 362 x 262 mm

Weight: 4,5 kg

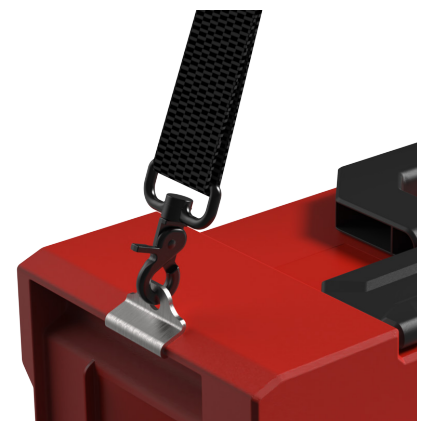
### PLASTON DETAILS



METABOX 63XS CONNECTS AS WELL TO THE  
METABOX 300XL CASE



THERMOFORMED-INSERT



CARRYING BELT CONNECTS TO ANY  
METABOX CASE

---

**PLASTON metaBOX**  
METABOX 300XL - FOR ANYTHING BIG

---



**PLASTON ACCESSORIES**

"Standard" [Trolley 34725 B](#) (from Adam Hall Hardware) can be simply attached (and removed) from the metaBOX 300XL.

